

PLATFORM LIFT A2

KALEA 





Fast Delivery

The Kalea A2 is designed to be production-friendly and suited to modern production process, as well as being flexible and quick to install.

All in all, this results in a short delivery and low costs. Very little space is needed, including the machinery. The lift makes the maximum use of platform size and door opening.



An Elegant Installation

A lift should blend into the environment and, therefore, we have put great emphasis on esthetics and design. The control panel has comfortable push buttons with clear symbols. Discrete illumination on the manoeuvring panel gives lighting over the platform. The self-supporting shaft is equipped with natural anodized aluminum corner profiles and white panels. The A2 platform lift can also be provided with aluminum framed glass panels.

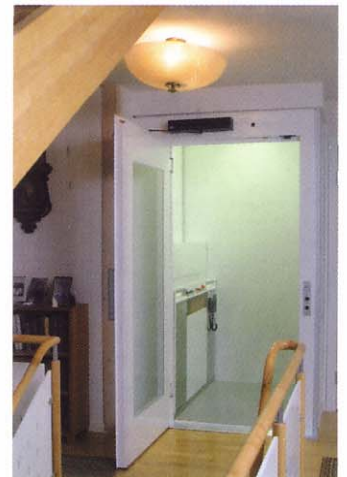




Installation Friendly Design

With its self-supporting design and electrical plug-in system, the minimum of preparation work is needed. The lift can be installed in existing environments and a lift-well is not needed.

The mechanical and electrical controls are placed within the shaft area, avoiding need of machinery area. The lift is designed to be energy efficient. The equipment is also carefully arranged for quick and economical installation as well as minimal service requirements.



Platform and panel from above.

Description

The maximum load capacity of the platform is 400 kg (A1 – 114 max, 680 kg).

Screw drive system with a travel speed of 0.15 m/s.

Elevation height up to 9 metre, with 2 – 5 stops.

Side hung doors in front with glass panel, right or left hinged.

The lift can be delivered with three opening side alternatives.

The platform size is 1000/1100 mm x 1400 mm.

(A1 – available with flexible platform sizes).

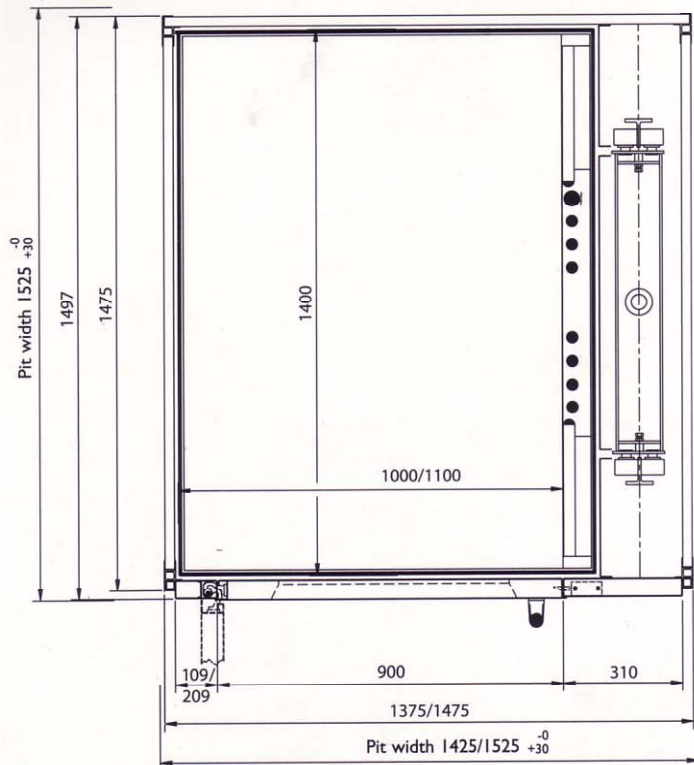
Platform flooring SafeStep, colour 7502 grey.

Safety edges on all sides of the platform.

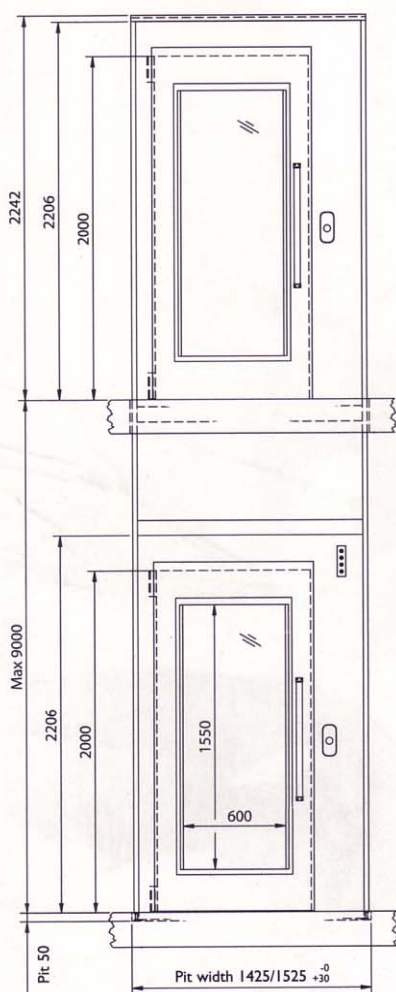
Terminal voltage single-phase, 230/240V, 16A, 50Hz.

Electro-mechanical control system with a PLC.

Shaft plan

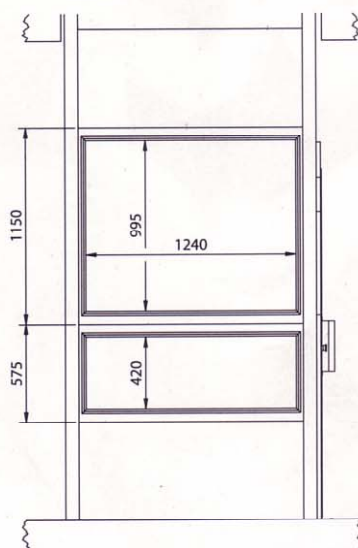


Door standard



More information of Kaleas products can be downloaded from www.kalea.se

Glass in shaft



Options

Automatic door opener.

Glass panels in aluminum frames, panel heights 575 respective 1150 mm.

Two-way communication via loudspeaker. Telephone.

Platform flooring in optional colours.

Fire rated doors

Ceiling with light fitting.

Ventilation of shaft ceiling.

Battery back up lowering from the platform.

Ramp of aluminium.

Large pushbuttons with tactile.

Voice announcement.

Safety

- Emergency signal buzzer on platform.
- Battery backed-up emergency lowering system from the outside of the door on the ground floor.
- Emergency lighting on manoeuvring panel.
- Safety edges on all sides of the platform.
- Pit prop activated from the outside of the shaft.
- Emergency stop button on platform, as well as in the pit.

Agent:

KALEA

Kalea Specialhissar AB
A Odhners gata 17, SE-421 30 Västra Frölunda, Sweden
Phone: +46 31 49 04 40 Fax: +46 31 47 31 62
E-mail: kalea@kalea.se
www.kalea.se